

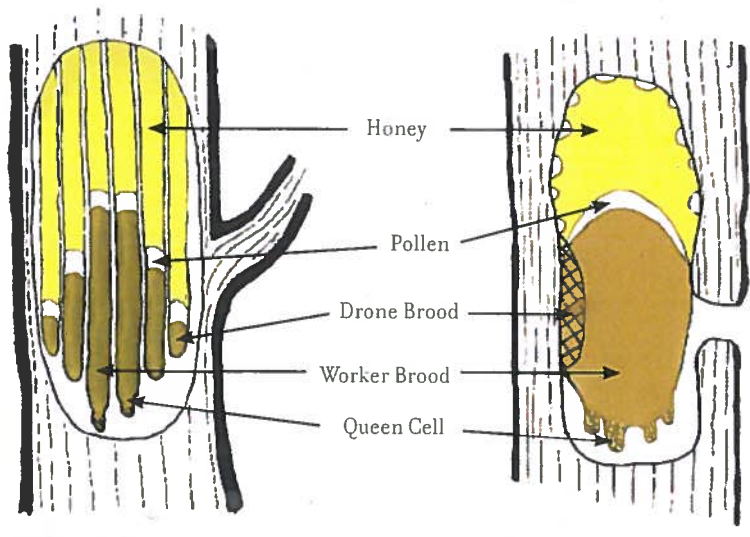
(3) Sources on honeybee generation:

Aristotle *HA* 5.21
Pliny *HN* 11.16
Columella *RR* 9.2.4
(and Varro *de Agr.* 3.16.4)

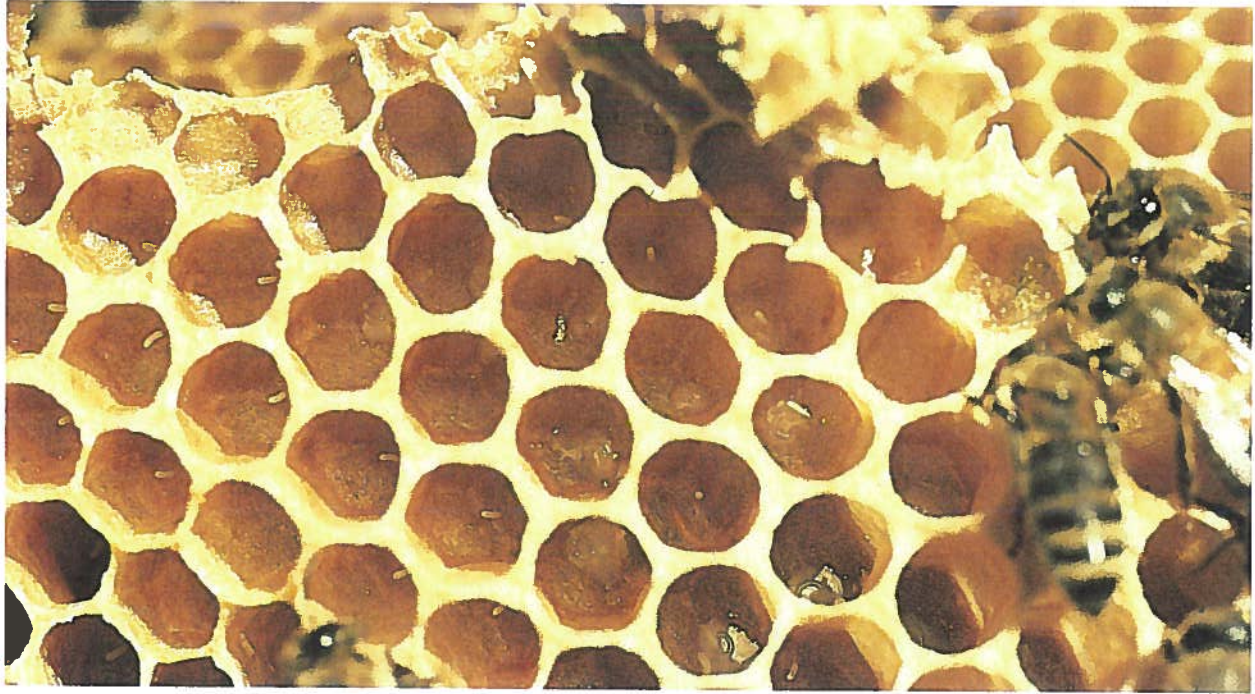
(4) How big (that is, small) is a millimeter?




(5) Hive cross section (Flottum, K. 2005. *The Backyard Beekeeper*. Beverly, MA: 59)



(6) Queen laying eggs in the brood nest (Flottum, K. 2005. *The Backyard Beekeeper*. Beverly, MA: 60)



 The queen lays eggs in the broodnest. You can see them in the bottoms of these cells.

(7) On the origins of the Roman people (based on Quintus Fabius Pictor?):

Livy *AUC* 1.6, 1.8

Plutarch *Rom.* 9.2-3

Dionysius 1.85, 1.89