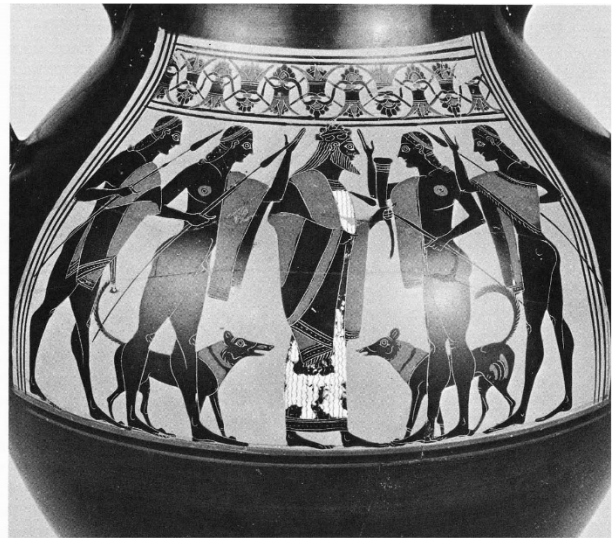


Going to the dogs with the Amasis Painter
Judith M. Thorn (jthorn@knox.edu)
CAMWS 2016



References

- ASPCA. http://www.scanimalshelter.org/sites/default/files/Canine_Body_Language_ASPCA.pdf
Downloaded June 28, 2015.
- Carpenter, T.H. 1986. *Dionysian Imagery in Archaic Greek Art – Its Development in Black-Figure Vase Painting*. Oxford.
- Fox, M.W. & M. Bekoff. (1975) “The Behaviour of Dogs.” In E.S.E. Hafez (ed.) *The Behaviour of Domestic Animals*. London.
- Franco, C. 2014. *Shameless – The Canine and the Feminine in Ancient Greece*. Berkeley CA.
- Horowitz, A. 2009. “Attention to Attention in the Domestic Dog (*Canis familiaris*).” *Anim Cogn* 12:107-118.
- Karouzou, S. 1956. *The Amasis Painter*. Oxford.
- Kitchell, K.F. 2013. *Animals in the Ancient World from A to Z*, Routledge, New York NY.
- Moon, W.G. 1979. *Greek Vase-Painting in Midwestern Collections*, Chicago, IL Perseus Digital Library (accessed May 5, 2014).
- Moore, M.B. 1968. “Horses by Exekias.” *Am. J. Arch.* 72(4):357-368.
- Osborne, R. 2011. *The History Written on the Classical Greek Body*. Cambridge.
- Pevnick, S.D. “Good Dog, Bad Dog: A Cup by the Triptolemos Painter and Aspects of Canine Behavior on Athenian Vases.” In J. H. Oakley (ed.) *Athenian Potters and Painters – Volume III*. Oxford.
- Von Bothmer, D. 1985. *The Amasis Painter and his World – Vase Painting in Sixth-Century B.C.* Athens. Malibu, CA.

OVER →

